



Setup Guide

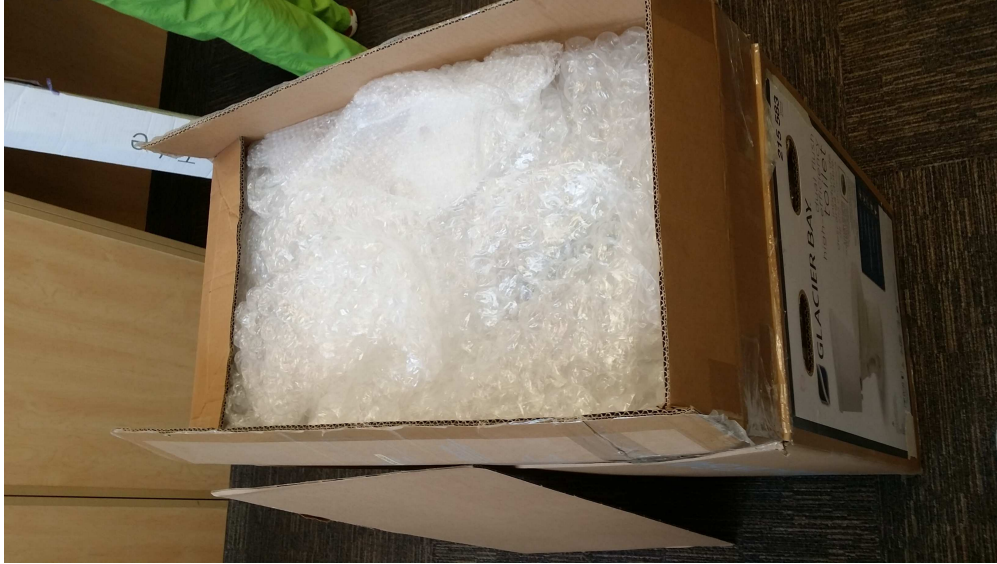
Krill Labs

Rev: Apr-10-2016

Designed, Assembled, and Programmed by Dan Krill (March 2011)

Unpackaging and Lifting:

1) Remove the top layer of bubble wrap.



2) Carefully remove the bubble wrap around the edges.



3) Once the rover is loose in the box, be sure to orient it so the green logo is closest to you and readable.

Then place one hand under the LEFT NEAR beam.



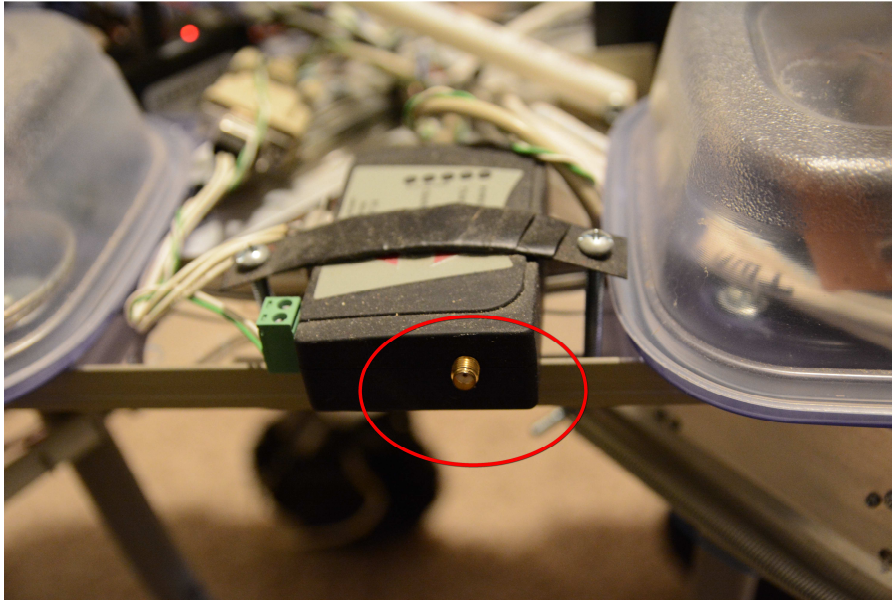
4) Place your other hand under the RIGHT FAR beam.

Lift the whole unit direct up gently.

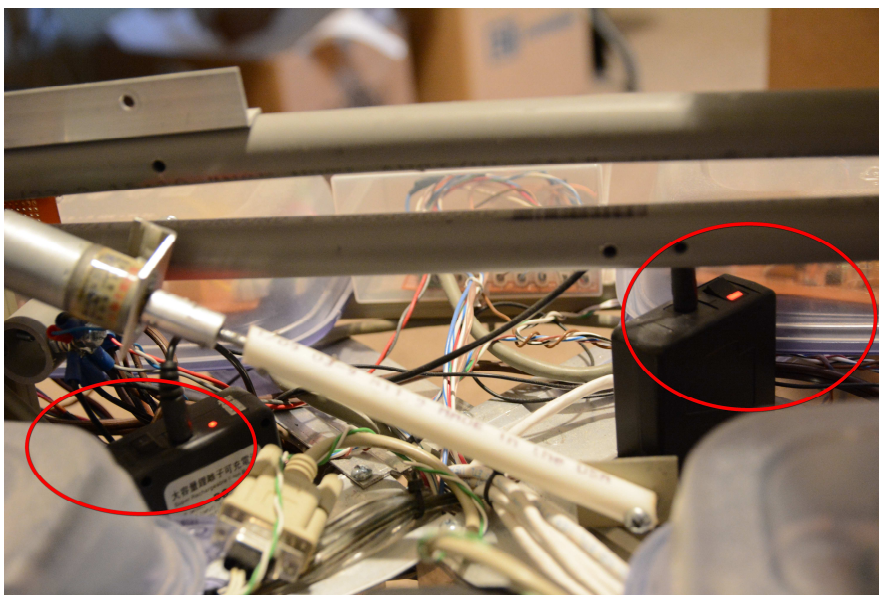


Powering On:

1) Reattach the antenna to the serial radio. The antenna is in the bag of parts at the bottom of the box under the bubble wrap.



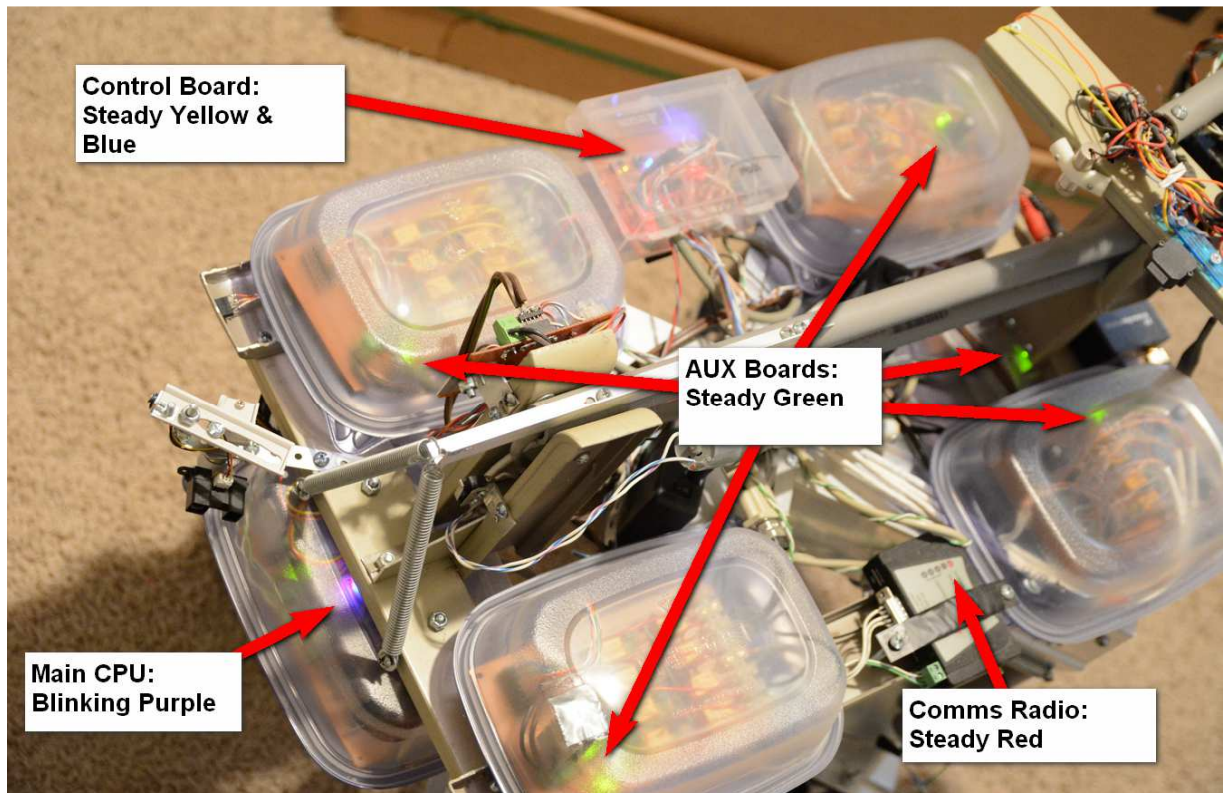
2) Flip on the toggle switches on both LI-ION cells. Each red LED will illuminate.



3) Press the 4-way flasher button.



4) All systems are functional if all the following LEDs are illuminated:

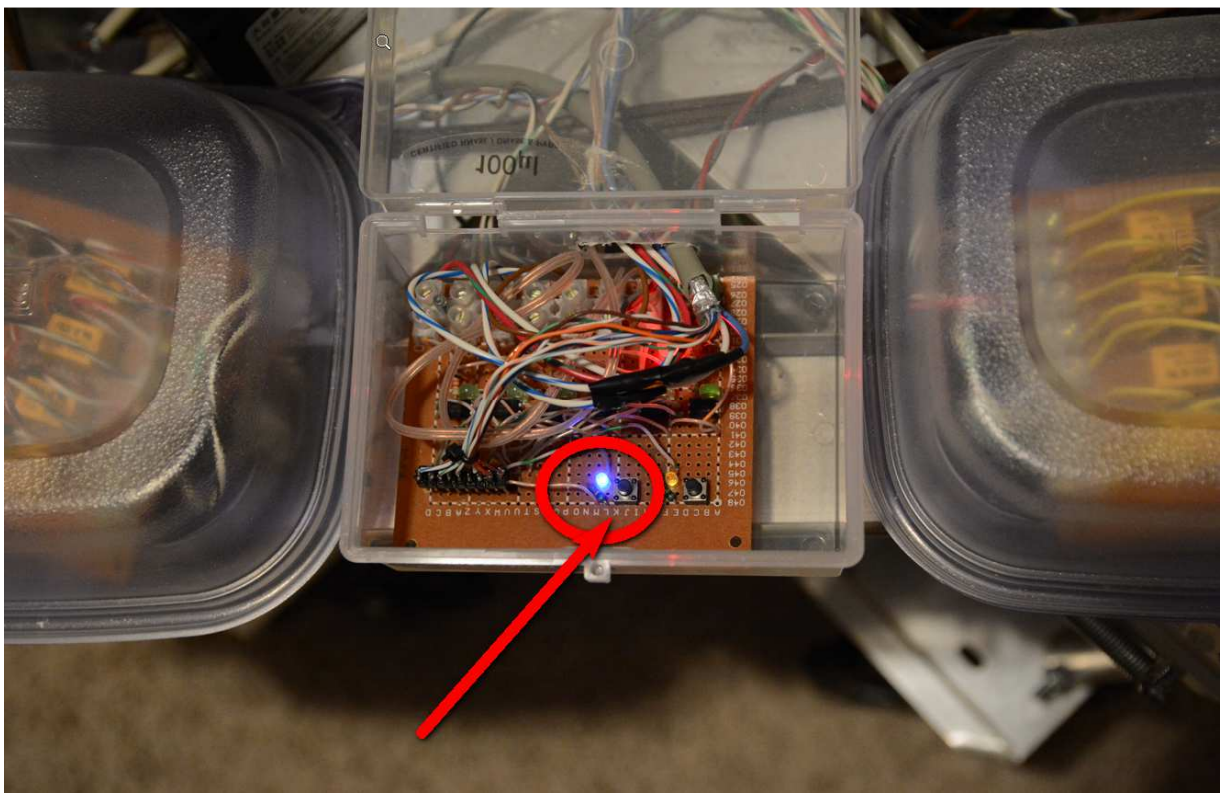


Initialization:

WARNING: Before initializing the rover, be sure you are on a hard floor (not carpeting), and that there are no objects within a 5 ft radius of the chassis.

1) Locate the control box, lift the lid, and press the button next to the blue LED.

This will initiate the Terrain Posture Transformation (TPT) sequence.

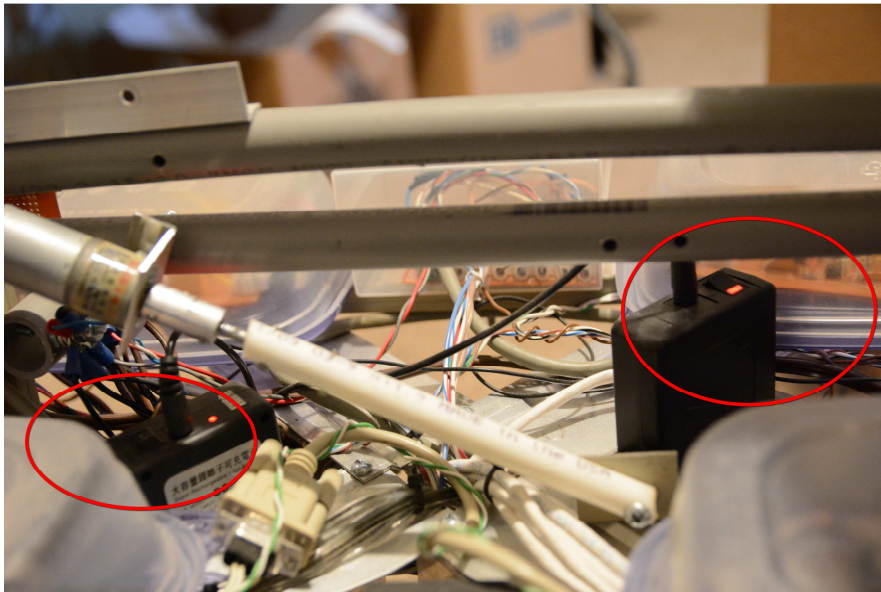


NOTE: The button next to the yellow LED will queue the rover to reassume it's folded up transport posture by effectively running the TPT macro in reverse.

Charging:

- 1) Locate the 2 LI-ION cells, and unplug the barrel power connectors from each of them.
- 2) The chargers are in the bag at the bottom of the box under the bubblewrap. Connect the charger cables to each cell, then plug the charges into a 120v outlet.
- 3) Flip both cell's toggle switches to the ON position.

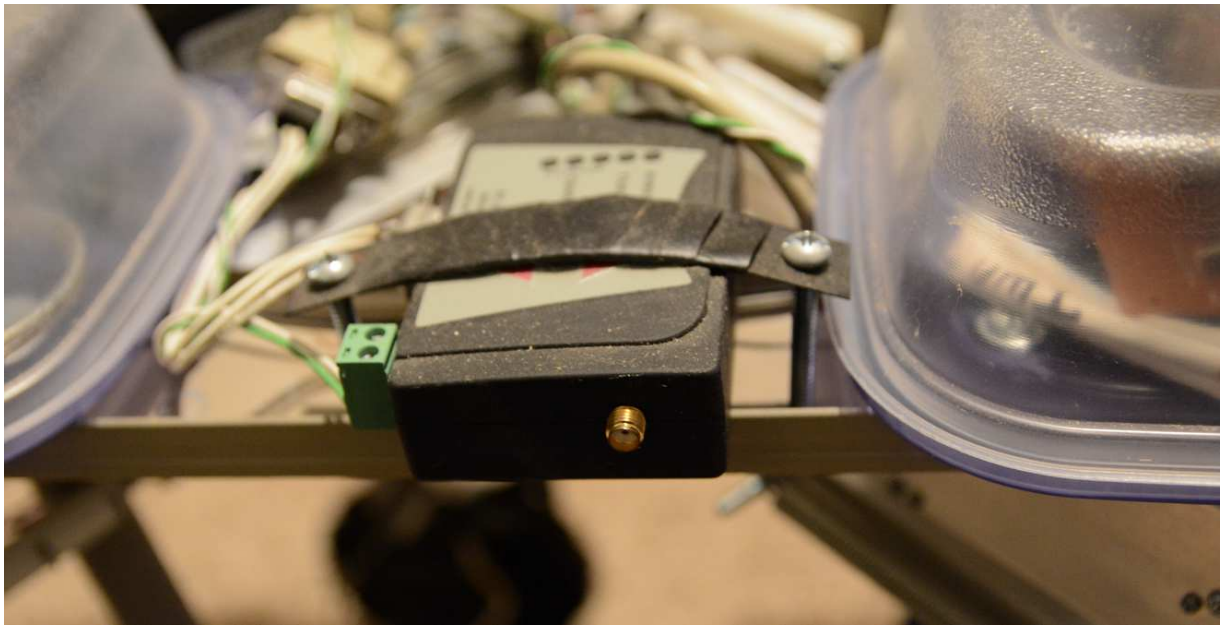
The red led should light on the chargers.



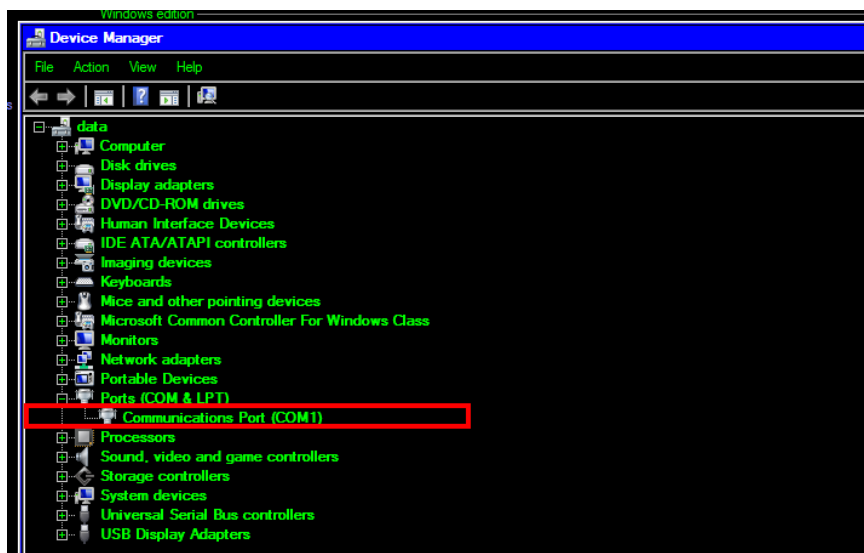
NOTE: The chargers may or may not turn green when complete due to the age. 5 to 6 hours should be a sufficient time for a full charge.

Control and Operation:

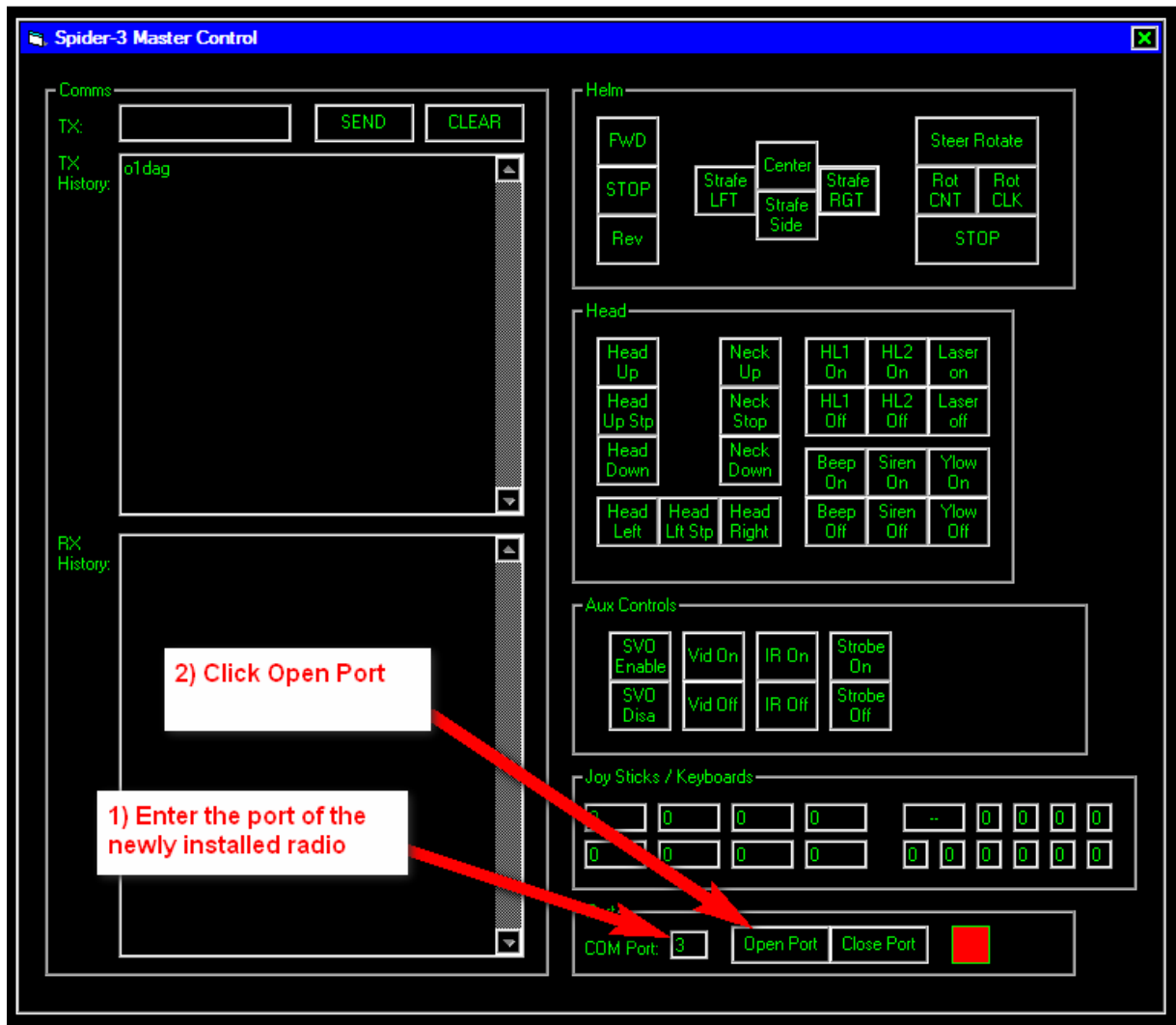
1) Locate the PC based serial rs-232 radio, it is in the bag at the bottom of the box under the bubblewrap. Connect the radio via USB to a compatible computer and install drivers as necessary (not included).



2) Determine what COM PORT the serial port has been assigned.



3) Run SPIDER3.EXE, enter the COM PORT from step 2, then click OPEN PORT.



NOTE: To steer: Click: Steer Rotate > Rot CLK > STOP > Center

NOTE: You can attach 2 joysticks, the buttons on the joysticks will automatically map to the various buttons on the control program.

[END TRANSMISSION]